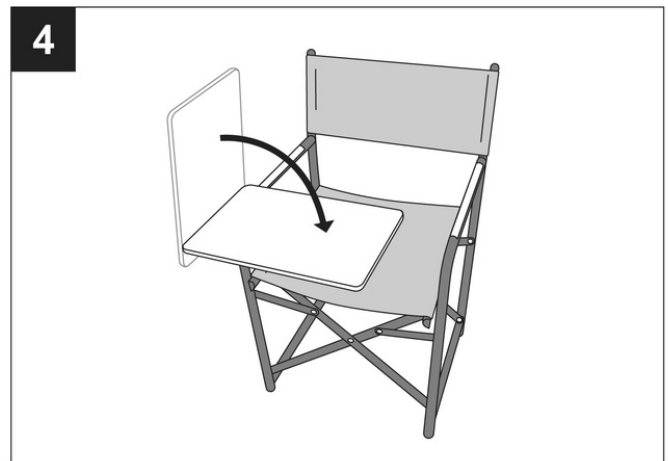
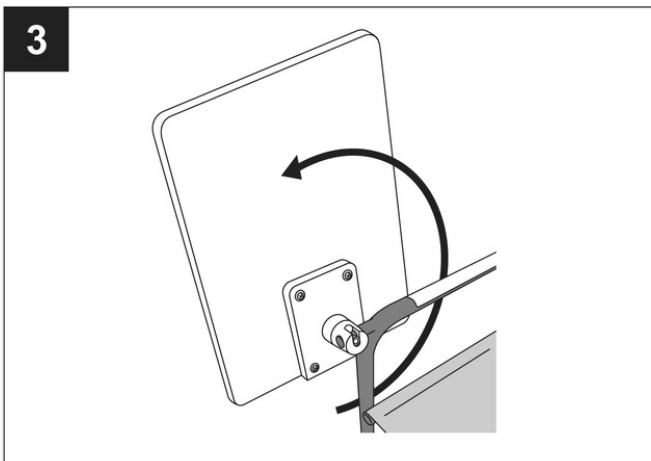
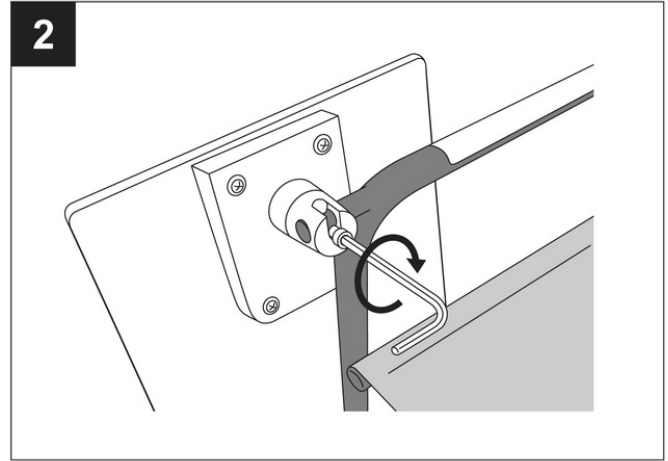
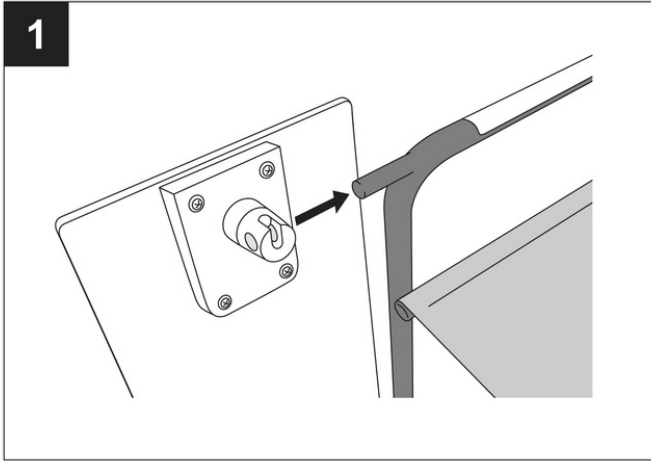


# INSTRUCTION MANUAL

## NOT A DESK CHAIR

### Instructions



#### STEP 1

Insert the table into the chair as shown on image 1, make sure you insert in exactly the same position as indicated on the image. Slide the table all the way until the hole is in the centre of the slot. This might be a tight fit but the holes should be right on top of each other so the screw is not diagonal. If it is too tight, you could use a hammer. Insert a small plank between the hammer and table so you don't harm it.

#### STEP 2

Take the red bag where you can find a screw and hex key. Fix the table to the chair with the screw and tighten in the direction as shown on image 2.

#### STEP 3

Once the table is connected, you should not disconnect anymore. When the connection is made, you can twist the table up as shown on image 3.

#### STEP 4

To use the chair, flip the table down as shown on image 4. The chair is ready for use!

## **DIGITAL NOMAD**

Easily take your work with you wherever you go with this innovative folding office chair! It features a rotating large sized bamboo tabletop held up by hand-welded aluminum tubing. The portable office desk is suited for left and right-handed people. When you are ready to get some productive work done, have a nice place to eat, or simply want to take a seat, unfold the desk and use the attached tabletop for all of your needs. It is perfect for digital nomads and other remote workers! Combine with the NOT A DESK backpack to be fully flexible.

## **MESSAGE FROM NOT A DESK FOUNDER ANDREAS DE SMEDT**

I came to understand for myself that working with a view helps to regain focus. Having grown up in the countryside, I found it difficult to find my focus in large open space offices. Being an engineer, I decided to take this matter in my own hands. After a few years of research I founded Notadesk.



## **WARNING**

NOT A DESK does not recommend to work with your eyes in direct sunlight. Do not exceed the load capacity of 10kg on the tabletop.

## **WARRANTY**

NOT A DESK offers warranty according to the policy on our website. Please contact us at [contact@notadesk.com](mailto:contact@notadesk.com) if you have any problems. Include pictures where possible. In care for our planet, we like to send replacement parts over replacing a full product.

## **DISCLAIMER**

NOT A DESK does not warrant the quality of the product in all environments and applications and makes no representations or warranties, either implied or express, concerning the quality.

NOT A DESK shall not be responsible for products found to be defective as a result of misuse, mishandling, or neglect. Information contained in this manual is subject to change without notice. The company reserves the right to make improvements to this manual and/or to the products described in this manual, at any time without notice. If you would like an electronic copy of the most up-to-date manual or if you find information contained in this manual that is inaccurate, misleading, or incomplete, please contact us at [contact@notadesk.com](mailto:contact@notadesk.com).

## **NEED MORE INSTRUCTIONS?**

Go to [notadesk.com/support](https://notadesk.com/support)

If you have any problem with the product or request any advice, please reach out to [contact@notadesk.com](mailto:contact@notadesk.com).

We will be happy to help you!

